



www.teknikintimandiri.com



Company Profile

Switch Board Solution

Providing Competent Services With Strengthen Worldwide Engineering and Product Qualities

Switch Board - Solution



Background



PT. Teknik Inti Mandiri established in 2008 with the aim to support client to developing their plant, improve the efficiency, boost the profitability and success of their industries business activities by providing competent services with strengthen worldwide engineering and product qualities. PT. Teknik Inti Mandiri has proved its competitiveness in both technically and commercially on the public market, have taken projects and as many clients.

Spirits

- Continuous growth and improvement through reliable professional engineering services.
- Continuous engineering support to build more and more power to the Country.
- To have long term partnership with the Client, government, employees and supplier.

Vision

Become professional engineering and supply company which industries and world wide development programs.

Mission

- To support client in developing, maintaining, improving their industries in the best expectation.
- To support client increasing profit by improving efficiency and availability. Highest engineering competence and product to meet client satisfaction.

Quality Assurance



PT. Teknik Inti Mandiri which follows the code of ethics laid down by International and the National Federation of Consulting Engineers, Suppliers.

PT. Teknik Inti Mandiri policy is to ensure the high quality of all our work. For each commission our aim is to fully meet the client requirements, and faithfully fulfill on the terms of the contract in order to ensure complete client satisfaction Our staff takes personal responsibility for quality of our work including our method for cooperating internally and externally, plus the attitude for quality performance of all products and services.

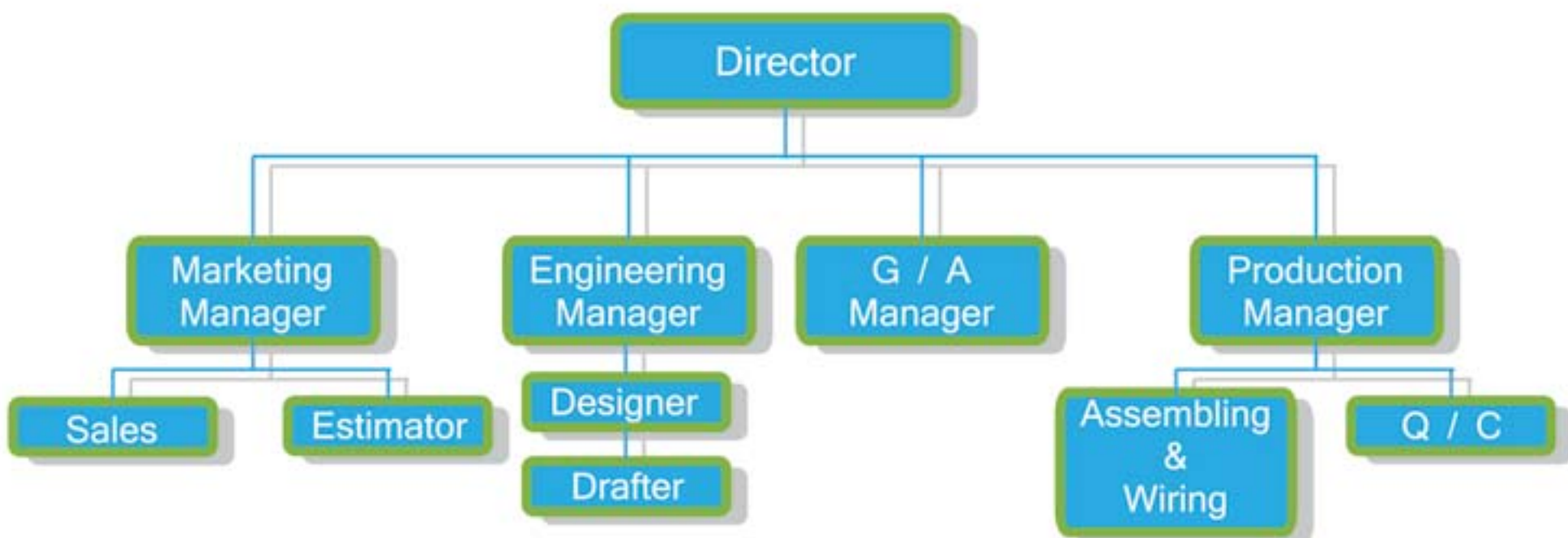
PT. Teknik Inti Mandiri reputation as based on high professional technical standarts. These are demonstrated on our daily routines works and in our ambition for continuous improvement.

Resources



The professional engineers necessary for each assignment come from permanent PT. Teknik Inti Mandiri personal and partners, global special agreement allow PT. Teknik Inti Mandiri to select manpower resources with are specially suited today's demanding job requirements. PT. Teknik Inti Mandiri is supported with complete engineering software (especially in design, installation of Panels product), complete latest technical library, and state-of-art computer network, which provides access to extensive array of latest worldwide engineering. In addition, mostly qualified professional engineers taken from a reputable universities in Indonesia, some of them have advance degrees mostly in engineering master degrees, are working in the project engineering for years.

Organization Chart of PT. TIM



Scope Of Services



PT. TIM company with complete resources, facilities and the engineers necessary for each assignment selected from qualified persons who are professional in all aspects. PT. TIM has complete competent, expertise and capability to offer and perform Electrical Panel for Power Plant & Industrial business.



Panel Control



Medium Voltage



MCC Panel



Low Voltage Panel

Electrical Panel Product

PT. TIM has reliable resources, expertise and capabilities to perform competitive engineering services. The qualified persons who are professional in all aspects Electrical Panel and Industrial Engineering. In this section, we are specialized in undertaking the following works :

- Medium Voltage Panels.
- Low Voltage Panels.
- Control Panels / Instrument Panels.
- Generator Synchronizing Panels.
- Automatic Main Failure.
- Automatic Transfer Switch.
- Capacitor Bank Panels.
- Motor Control Centre Panels.
- Transformer Cubicle.



Bending Machine



CNC Machine



Projects



Maintaining good relations and long-standing essential to smooth business in addition to equipment availability and productivity to meet the standards demanded by our customers, maintenance management is very important. PT. TIM has developed a close working relationship and partnership with many of their customers to ensure that the combined resources and skills used to maximize equipment availability and reduce costs. Maintenance and repair program is designed to suit the specific requirements of the projects and the extent of the supply base for parts and equipment repair and maintenance contract costs.

Maintenance



Maintenance is one service provide to quality of any product, provided services we give is: care system, damage and etc. with a rapid response services expected to provide the best solutions and maximum results. Handling problems requiring precision and accuracy in decision-making so that problems can be handled properly. Problems response unit delivered spaciousness and handling procedure for working with professional. All staff in their fields PT.TIM provide the best act and solutions that satisfy all parties. Car always support the team ready for all possibilities.



Car always support the team ready for all possibilities.







Graha Cibinong Blok C No - 8
Jl Raya Bogor Km. 43
Cibinong - Bogor 16917
Tlp. 021-87917020, Fax. 021-87917021
www.teknikintimandiri.com